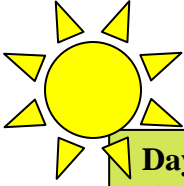




# Construction Bulletin

## Queensboro Ed Koch Bridge **Walkway/Bikeway Closures** **Saturday, June 15**



Daytime  
Closure

<i>Queens &amp; Manhattan</i>	<i>Community Boards 1 &amp; 8</i>	<i>June 2013</i>
-------------------------------	-----------------------------------	------------------

The Division of Bridges is scheduling the resurfacing of the wearing surface of the bikeway/walkway of the Queensboro Ed Koch Bridge. This work will require the complete closure of the path to accommodate the personnel and equipment for the paving operation. This work is scheduled for **Saturday, June 15<sup>th</sup> between 5:00 a.m. and 5:00 p.m.** This work is weather sensitive and **inclement weather will require work to be completed on Tuesday June 18<sup>th</sup>.** To accommodate pedestrians and cyclists, a shuttle bus will be provided in both directions throughout the closure.

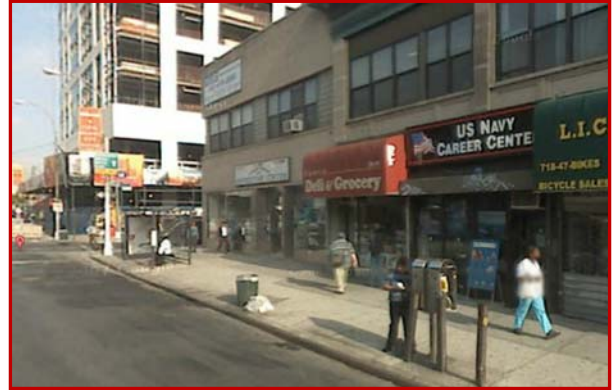
### Manhattan Shuttle Stop

60<sup>th</sup> St. & 2<sup>nd</sup> Ave. (Northeast Corner @Atomic Wings)



### Queens Shuttle Stop

Crescent Street at Queens Plaza North



**Walkway/Bikeway Closure**  
**Saturday June 15<sup>th</sup> 5:00 a.m. to 5:00 p.m.**  
**Raindate Tuesday June 18<sup>th</sup>**

Alea Gillead of the Office of Community Affairs is available to provide information about the project at 212-839-6306 or [agillead@dot.nyc.gov](mailto:agillead@dot.nyc.gov). For all NYC non-emergency services, including inquiries regarding NYCDOT construction project, dial 311. Be prepared to give your name, the borough of the project and return phone number



your city. your needs. your number.